



Lesson Plan

Introducing SART



SART Training Media



Introducing SART

Lesson Plan

Prepared by: Gregory Christy, State ESF-17 Coordinator, Fla. Dept of Agriculture and Consumer Services, Division of Animal Industry
Elizabeth A. Wang, University of Florida, Gainesville
Carol J. Lehtola, Associate Professor, University of Florida, Gainesville
Charles M. Brown, University of Florida, Gainesville

Copyright by Florida Department of Agriculture and Consumer Services

Published March 2005

SART Training Media are available for download from the Florida SART Web site
<www.flsart.org>.

Contents

About Florida SART	4
Introduction	5
Session Outline	5
Specific Learning Objectives	6
Learning Environment/Aids	6
Before the Workshop	7
Part 1 — Beginning the Lesson	7
Part 2 — Common and Possible Florida Disasters	8
Part 3 — Deficiencies Identified	9
Part 4 — Need for the SART Organization	10
Part 5 — Training Event and Available Modules	12
Part 6 — Highlight Resources	13
Part 7 — Summary and Wrap-Up	15
Participant Evaluation	16
Pre- and Post-Tests and Answer Key	17
PowerPoint Slides Summary Pages	21
PowerPoint Slides — Full-Size	29
PowerPoint Slides — Handout Pages	107

About Florida SART

SART is a group of governmental and private agencies dedicated to effectively communicating and planning for animal and agriculture emergencies and disasters in Florida.

SART operates at the local level through county SART organizations.

SART combines the skills and resources of many agencies, organizations and individuals.

SART supports the county, regional, and state emergency management efforts.

SART Mission

Empower Floridians with training and resources to enhance animal and agriculture disaster response.

SART Goals

- Promote the establishment of a coordinator in each county responsible for all agriculturally related incidents
 - Provide assistance in the development and writing of county ESF-17 plans
 - Promote the establishment of a County SART for each county
 - Provide annual training for all SART and agriculturally-related personnel
 - Identify county resources available for an emergency or disaster
 - Promote counties to work at a regional level for mutual aid
-

Subject: Introduce participants to the disasters that are common and possible in Florida, the agencies that respond to these disasters, the need for state and county components of a SART and provide oversight to the training event and modules composing it.

Mission: Empower local citizens with the knowledge of how to cope with various disasters that may affect Florida animals and agriculture.

Introduction

This lesson plan and its accompanying workbook are the basis for the county SART training module that introduces the SART organization. The lesson plan guides the instructor in presenting the educational portion of the workshop. The mechanics of planning, organizing and publicizing the entire training event are covered in the companion manual, *Make It Happen! Toolkit for Planning a Community-Based SART Training Event*. For information on obtaining the Toolkit, please refer to the Resources section of this publication.

This lesson plan provides an introductory overview of the SART and county SART concepts, how they were developed, and their mission and goals.

A PowerPoint presentation has been created to accompany the lesson. Throughout the lesson plan, slide symbols on each page indicate that a PowerPoint slide is available for that section.

Approximately 45-70 minutes should be allocated for this program.

Session Outline

Part 1 - Beginning the Lesson	(5-10 minutes)
Part 2 - Common and Possible Florida Disasters	(5-10 minutes)
Part 3 - Deficiencies Identified	(5-10 minutes)
Part 4 - Need for the SART Program	(10-15 minutes)
Part 5 - Training Event and Available Modules	(5-10 minutes)
Part 6 - Summary and Wrap-up	(10-15 minutes)

Specific Learning Objectives

At the end of this training module, participants will be able to:

1. Identify reasons why Florida is at risk for disasters.
2. Identify and describe the disasters that may strike the state.
3. List the agencies that coordinate and/or participate in emergency disaster and response.
4. Discuss the problems created when agencies respond and plan separately.
5. Cite the mission, concept and goal of the SART program.
6. Identify key resources that participants can easily access for more information.

Learning Environment/Aids

To complete this lesson plan, you will need:

- The PowerPoint presentation “Introducing SART”
- Optional: *Introducing SART Workbook*. This participant workbook contains copies of the PowerPoint slides and resource information.
- Optional: *Make It Happen! Toolkit for Planning a Community-Based SART Training Event*. This publication is available to help you organize, plan and present an entire SART training event with multiple training modules.
- (See the Resources section of this publication to find out more about any of the materials listed above.)

To conduct this training module, you will need:

- A means to show the PowerPoint presentation: a computer with a projector. (Note: Black-and-white copies of the slides are included in this manual if you prefer to use an overhead projector.)
- Sufficient seating for all participants.

Each participant will need:

- Pen or pencil
 - *Introducing SART Workbook*, or paper for notes
-

Before the Workshop

On the day of the workshop, check that all equipment needed is in place. Double-check that electronic media works on the equipment you have. Also, make certain that any materials, such as paper, workbooks, and pens/pencils for participants, are available in sufficient numbers to cover all participants.

Part 1: Beginning the Workshop

Time: 5-10 minutes

Focus: “What is your disaster awareness level?”

SLIDES

1-3

Once all participants have taken their seats and have settled down, welcome them to the “Introducing SART” workshop. Thank them for attending and congratulate them on taking the time to make a difference in the lives of their families, friends, communities and businesses. Remind them that the best way to respond to an emergency is to be prepared for it.

At this point, you may elect to give participants the pre-test provided in this manual. Together with the post-test, this can be used as a method of evaluation to gauge the knowledge participants gained during the session.

SLIDE

4

This particular lesson plan can be used with agricultural and non-agricultural audiences. The purpose of this lesson is to introduce people to the disasters that could befall Florida, the agencies that respond to these disasters, the SART concept and other topics available in the entire training program. Several other training modules are industry- and/or topic-specific. After this introductory overview, participants should be able to decide what other topics interest them.

Remind attendees that the reason they are attending the workshop is that they realize the value of being prepared by having a disaster plan in place.

This introduction should not extend beyond five to ten minutes. This is a time when the audience is getting comfortable with the workshop they have decided to attend, the surroundings and you, the presenter. At the same time, the presenter is getting comfortable with the audience, the material to be presented, and being a presenter. Pay close attention to time; you may find yourself a bit nervous at the beginning. “Nerves” make some people ramble, or talk faster or slower. Still others lose track of time and forget to move on. Even if your audience is enjoying what they are doing, they will appreciate your discipline when the workshop ends on time. As they sometimes say in show business, “Always leave ‘em wanting more!”

Part 2: Agriculture at Risk

Time: 5-10 minutes

Focus: Identify the disasters common and possible in Florida

SLIDES

5-7

Florida has been called an agricultural sentinel state by many because if a foreign animal or plant disease or agro-terrorism event occurs in the United States, there is a great chance it will occur first in Florida. An important reason for this is that there are many transportation routes into the state.

The Florida Department of Transportation has said that the state has “one of the most comprehensive and progressive airport systems in the country,” comprised of 20 commercial, 11 general aviation, 12 military and 700 privately owned airfields located throughout the state. Commercial and general aviation airports alone transport nearly 120 million passengers per year. Approximately half of Florida’s 75 million tourists per year arrive by air transport.

Twelve seaports are distributed along the state’s coastline. These ports accommodate millions of tons of cargo along with cruise ship arrivals and departures. The Tampa Port Authority is the largest in the state, with the Port of Miami-Dade a close second.

Tourism is the primary business driving Florida’s economy (agriculture is second). In 2003, 75 million people visited the state. Just over 90% were domestic visitors, and the remaining 10% were from foreign countries, including Canada.

[While this information is being shared, do not hesitate to ask for audience participation; ask your audience to share the name of their nearest major airport or seaport. Get participants to volunteer responses to these initial slides.]

SLIDE

8

Florida is also susceptible to natural disaster. As a peninsula between two warm bodies of water, the Atlantic and the Gulf of Mexico, Florida has been the target of more hurricanes than any other state in the Union. Florida has been struck by destructive hurricanes over 30 times in the last 20 years. [Take this opportunity to quiz the audience on the hurricanes or tropical storms they remember.]

SLIDE

9

High summer temperatures and drought during some years has brought wildfires to communities across Florida. These fires can devastate urban and rural residences, but they impact agriculture as well, though that is not always the focus in media stories. Grazing animals, like horses, cattle and specialty animals, can lose pasture, depriving them of home and food, and sometimes, their lives. Drought can also cause significant losses to plant crops. As well as being susceptible to drought, Florida agriculture can be threatened by excessively wet conditions. Too much rain can exacerbate disease conditions, or in the extreme, flooding can destroy fields of crops.

SLIDE

10

Nature can wreak havoc on Florida, but disasters can also be caused by people. Foreign animal or plant disease introductions can be just as devastating as natural disaster, sometimes more if there is no way to combat the disease or pest. Some examples of possible agro-terrorism agents of infection are anthrax and foot-and-mouth disease.

SLIDE

11

Agriculture in Florida has an annual economic impact of \$62 billion. This important industry faces great risks from potential natural and man-made disasters.

Part 3: Deficiencies Identified**Time: 5-10 minutes****Focus: Describe the deficiencies with the current methods and agencies that plan for and respond to emergencies**

SLIDES

12-13

Several cooperating — and often competing — agencies share responsibilities for emergency/disaster management and planning as it relates to state agricultural issues. These agencies often duplicate efforts and compete for a limited pool of emergency/disaster management resources and funding. These agencies have the best intentions in their work and communicate to some extent. However, an effective level of cooperation with communication between agencies and the counties they serve, with respect to agricultural emergency/disaster management, does not exist.

The public ends up not knowing exactly who to contact either. Should they speak with their Extension agent? With a Forestry ranger? Chances are, many people have been directed in circles to several agencies and people when trying to get a question answered or a problem diagnosed.

Part 4: Need for the SART organization

Time: 10-15 minutes

Focus: Cite the SART mission and explain the need for the program

SLIDES

14-15

The solution to solve these quandaries? The Florida State Agricultural Response Team (SART). SART exists to bring together the responding and planning agencies such as the Florida Department of Agriculture and Consumer Services (FDACS), the United States Department of Agriculture (USDA) and the Farm Service Agency with the UF/IFAS Extension Service and the public. The mission of this diverse team is to “empower Floridians with training and resources to enhance animal and agriculture disaster response.”

SLIDES

16-17

The SART concept has several goals:

- Promote the establishment of ESF-17* Coordinators in every Florida county. These coordinators would be responsible for overseeing all agriculturally related incidents in their county.
 - * ESF-17 stands for Emergency Support Function number 17. There are seventeen emergency support functions under the Comprehensive Emergency Management Plan (CEMP). Number 17 is for animal protection (both livestock and pets) and agriculture.
 - Provide assistance in the development and writing of county ESF-17 emergency and disaster plans.
 - Promote the establishment of a SART team in each county with members representing not only individuals from the participating agencies, but the public as well.
 - Conduct annual SART training for all SART and animal and agriculturally related personnel by hosting a SART training event.
 - Identify county resources available for an emergency or disaster by compiling a database or even just a list with contact information. This database or list would be made available to those assisting in an emergency situation.
 - Promote counties working at a regional level for mutual aid during times of need. Remember, more hands make less work!
-

SLIDE**17**

- Promote the cooperation and exchange of information of interested state, county and civic agencies. Each of them has a wealth of information at their disposal that could potentially help in a time of need. This sharing would also prevent, or at the very least lessen, the duplication of effort in planning and response.

SLIDES**18-21**

SART is being organized from the state level to regions and then into the counties. There are several agencies participating in the development of the SART organization, including the United States Department of Agriculture's (USDA) Farm Service Agency, USDA Natural Resource Conservation Service (NRCS), USDA Rural Development, the University of Florida's Institute of Food and Agricultural Sciences (UF/IFAS), the Department of Community Affairs' Division of Emergency Management and, finally, the Florida Department of Agriculture and Consumer Service's (FDACS) Division of Animal Industry.

Several other departments or divisions providing support include FDACS' Divisions of Agriculture Environmental Services, Plant Industry and Dairy, the USDA's Animal and Plant Health Inspection Service (APHIS) and Veterinary Services, and the University of Florida's College of Veterinary Medicine and Department of Plant Pathology. Other supporting agencies include:

- Florida Veterinary Medical Association (FVMA)
- Florida Animal Control Association (FACA)
- Southeast Regional Office of the Humane Society of the U.S. (HSUS)
- Florida Cattlemen's Association
- Florida Sunshine Horse Council
- Florida Farm Bureau

[This would be a good time to get your audience involved again by asking them to think of and share the names of agencies they know of that they believe might be interested in working with their SART. This not only keeps the audience involved in the "here and now" of the presentation, but also gives them a sense of ownership and a starting point of a contact list to take home and work on with their fellow SART members.]

SLIDES**22-23**

Emergency management operations for the state of Florida are overseen by the Department of Community Affairs' Division of Emergency Management. This agency operates under Florida Statutes Chapter 252 and administers the Comprehensive Emergency Management Plan (CEMP). The CEMP provides guidance to state and local officials on procedures, organization and responsibility and adopts a functional approach that combines the

types of assistance to be provided under each emergency support function. State emergency operations work 24 hours a day, seven days a week, serving all 67 counties in Florida. Emergency operations manages the Warning Point, Operations Center and the State Emergency Response Team.

SLIDES**24-25**

The county SART will operate under the direction of the county's Emergency Management Director, but be led by the county's ESF-17 Coordinator. Each of the agencies will assign personnel to each county SART with other members of the team coming from the public and county and other support agencies as identified by the county SART. [Slide 25 depicts the steps to forming a County SART. Detailed information on this easy process in the SART lesson plan on Creating a County SART.]

SLIDE**26**

County SART teams shall work cooperatively with each other in regions that mirror those identified by the Division of Emergency Management. County SARTs will be expected to share their resources, participate during annual training and exercises, assist each other as mutual aid during a response and aid lesser-prepared counties.

SLIDE**27**

At the state level, representatives of the participating agencies will meet routinely as a team to share information, resources and risks, plan, support and participate in the annual regional training sessions, provide financial support for SART and maintain availability to the state's emergency operations center (EOC) during emergencies or disasters.

Part 5: SART Training

Time: 5-10 minutes

Focus: Understand the SART training process and the modules available and in development

SLIDES**28-30**

All SART members will be provided training annually at regional locations determined by the participating agencies. The training events will be prepared, presented and supported by the participating agencies to the SART program. A presenter may be an industry expert in his or her field and not necessarily a member or employee of one of the agencies. Eventually, the SART training materials will be publicly available. Groups like FFA chapters, 4-H clubs and other civic organizations may decide to use the materials for their own training. This is when county SARTs would use the materials to train their members.

The training event will consist of several training modules, or presentations, on various disaster, emergency or agro-terrorism topics relating to agriculture and its disciplines. Workbooks and PowerPoint presentations will be available for every unit. The training will attempt to emphasize hands-on training wherever possible. Module topics include: Aquaculture, Livestock and Horses, and Pets in Disasters, SART Introduction, and Incident Command System (ICS)

SLIDES**31-32**

All the materials used in the training events are available on the SART Web site at <www.flsart.org>. The Web site will be the main bridge of communication among SART participants and participating agencies. It will function as a Web portal where all SART information can be inputted and shared. Eventually, the Web site will also serve as a base for a system from which alerts and information can be sent simultaneously to all county SARTs and every participating agency. Other future functions of the site include training calendars and serving as a center for county SARTs to create a resource database.

Part 6: Highlight Resources

Time: 5-10 minutes

Focus: Identify key resources that participants can easily access for more information

SLIDES**33-36**

The following are sources of additional information about the agencies mentioned in this introduction.

Florida Dept. of Community Affairs, Div. of Emergency Management
<http://www.floridadisaster.org>

SART

<http://www.flsart.org>

Visit this Web site for updates and training materials.

United States Department of Agriculture (USDA)

<http://www.usda.gov>

Florida Department of Agriculture and Consumer Services (FDACS)

<http://www.doacs.state.fl.us>

Federal Emergency Management Agency (FEMA)

<http://www.fema.gov>

IFAS Disaster Handbook

<http://disaster.ifas.ufl.edu>

National Agricultural Safety Database (NASD)

<http://www.cdc.gov/nasd>

Florida AgSafe

<http://www.flagsafe.ufl.edu>

General seaport and airport information

<http://dlis.dos.state.fl.us/fgils/seaports.html>

<http://www.broward.org/portannualrep03/p4.pdf>

<http://www.dot.state.fl.us/aviation>

2003 Tourism Statistics

http://www.visitflorida.org/_pdf/partner_research/YearInBrief/2003YearInBrief.pdf

Florida Agriculture Brochures and Publications

Available for agribusiness and consumers from following site. 'Consumers' link has facts, statistics and additional links.

<http://www.florida-agriculture.com>

Florida Hurricanes and Tropical Storms 1871-2001

Book by John M. William and Iver W. Duedall

Extension Disaster Education Network (EDEN)

<http://www.agctr.lsu.edu/eden>

FEMA On-line Courses

On-line training courses from the Emergency Management Institute (EMI) are available at no cost on the FEMA Web site <<http://training.fema.gov>>. CEU certificates are available. Especially useful may be the *Introduction to CERT (Community Emergency Response Teams)*, IS-317. It provides background information on the concept of community members being able to work together during a disaster. Access this course at:

<<http://training.fema.gov/EMIWeb/IS/is317.asp>>.

Other courses which might be useful with this module include:

- Emergency Preparedness (IS-2)
 - State Disaster Management (IS-208)
-

- The EOC's Role in Community Preparedness, Response and Recovery Activities (IS-275)
- Role of Voluntary Agencies in Emergency Management (IS-288)
- Disaster Basics (IS-292)
- Introduction to Community Emergency Response Teams (IS-317)

A listing of all the IS courses offered by FEMA can be found at:

<<http://training.fema.gov/EMIWeb/IS/crslist.asp>>.

Part 7: Summary and Wrap-Up

Time: 5-10 minutes

Focus: Follow through with the commitment to SART

SLIDE

37

You and your audience have had a stimulating and practical 45–55 minutes, but it is almost over. Encourage them that the presentation was just a sampling of the material available to them as SART participants. Finally, prior to answering any audience questions or comments, provide a summary of what they just learned:

- The disasters common and possible in Florida
- The deficiencies with the current system of emergency planning and management as it relates to agriculture
- The need for SART, its mission and goals
- Who will become members of the county SART and who will support its various functions
- How the training for SART will be conducted
- Valuable resources they can readily access for information

SLIDE

38

Thank the audience for their attention and participation. Congratulate them for their commitment to this endeavor and their desire to be part of the solution. For the last slide, present local contact information.

Participant's Evaluation of *Introducing SART* Training

Please circle the number that best expresses your opinions about the following statements.

		Fully Dis- Agree	Dis- Agree	Neutral	Agree	Fully Agree
1.	The training module's format was appropriate.	1	2	3	4	5
2.	The information presented is useful to me.	1	2	3	4	5
3.	The time it took to complete this module was acceptable.	1	2	3	4	5
4.	The reasons that Florida is at risk for disasters were explained fully.	1	2	3	4	5
5.	Disasters that could impact Florida were explained in sufficient detail.	1	2	3	4	5
6.	The agencies involved with emergency and disaster response were clearly outlined.	1	2	3	4	5
7.	The current issues surrounding various agencies' response to emergencies were explained.	1	2	3	4	5
8.	The mission, concept, and goals of the SART and county SART programs were sufficiently explained.	1	2	3	4	5
9.	Available, up-to-date resources were clearly outlined.	1	2	3	4	5
10.	We welcome your comments about this program:					

Please use the back of this sheet for any further comments.

Thank you for your time!

Introducing SART Participant Pre-Test

This pre-test is intended to gauge the level of knowledge that you have **before** participating in the *Introducing SART* training. Please answer all the following questions to the best of your ability.

1. Why is Florida referred to as an agricultural “sentinel state”?

 2. Name three potential disasters, man-made or natural, that are threats to Florida’s agriculture industry.

 3. SART is the _____.
 4. List three agencies that participate in SART.

 5. Why is it important for these agencies to have a coordinated effort when responding to an agricultural emergency?

 6. On-line, emergency-related training courses are available free through _____.
 7. Name three groups of people who can become members of SART.

 8. What will provide a communication bridge between all participating agencies, function as a portal to input information, other things?

 9. Name three resources useful for emergency and disaster information.

 10. Emergency Support Function (ESF) 17 covers animal protection and _____ emergencies.
-

Introducing SART Participant Post-Test

This post-test is intended to gauge the level of knowledge that you have **after** participating in the *Introducing SART* training. Please answer all the following questions to the best of your ability.

1. Why is Florida referred to as an agricultural “sentinel state”?

 2. Name three potential disasters, man-made or natural, that are threats to Florida’s agriculture industry.

 3. SART is the _____.
 4. List three agencies that participate in SART.

 5. Why is it important for these agencies to have a coordinated effort when responding to an agricultural emergency?

 6. On-line, emergency-related training courses are available free through _____.
 7. Name three groups of people who can become members of SART.

 8. What will provide a communication bridge between all core and supporting agencies, function as a portal to input information,

 9. Name three resources useful for emergency and disaster information.

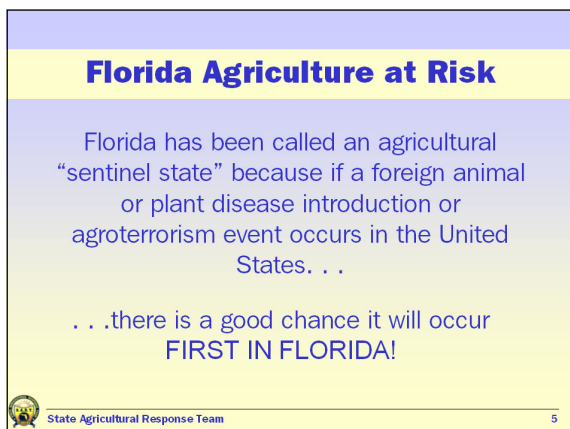
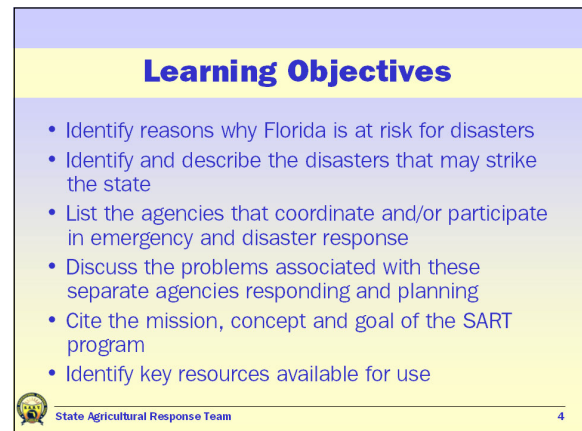
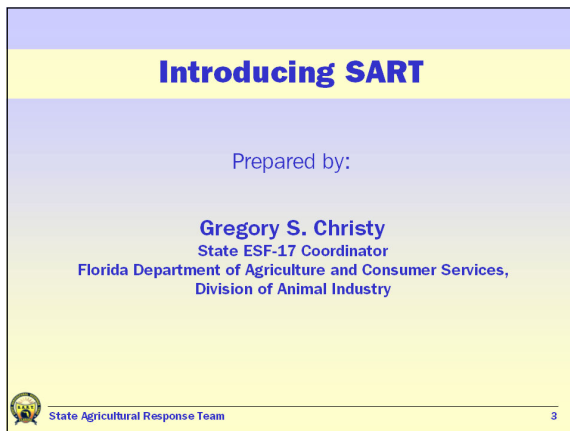
 10. Emergency Support Function (ESF) 17 covers animal protection and _____ emergencies.
-

Answer Key to Introducing SART Pre- and Post-Tests

1. **Why is Florida referred to as an agricultural “sentinel state”?** Florida is referred to as an agricultural sentinel state because, if a foreign animal disease introduction or agro-terrorism event occurs in the United States, there is a good chance that it will occur in Florida first.
 2. **Name three potential disasters, man-made or natural, that are threats to Florida’s agriculture industry.** Answers include: hurricanes, tornadoes, floods, drought, foreign animal/plant diseases or introduction, agro-terrorism event, etc.
 3. **SART is the** State Agricultural Response Team.
 4. **List three agencies that participate in SART.** Answers include: USDA Farm Service Agency, USDA NRCS, USDA Rural Development, UF/IFAS, FDACS Division of Emergency Management, FDACS Division of Animal Industry, FDACS Division of Agriculture Environmental Services, etc.
 5. **Why is it important for these agencies to have a coordinated effort when responding to an agricultural emergency?** It is important for these agencies to have a coordinated effort when responding to an agricultural emergency so as to not duplicate their efforts. An effective level of communication and cooperation does not currently exist between agencies and counties when dealing with agricultural emergencies.
 6. **On-line, emergency-related training courses are available free through** FEMA.
 7. **Name three groups of people who can become members of SART.** Answers include: Participating agency personnel, government agency personnel, producers, emergency management personnel, veterinarians, animal control officers, agribusiness retailers, etc.
 8. **What will provide a communication bridge between all core and supporting agencies, function as a portal to input information, among other things?**
The SART Web site <www.flsart.org>
 9. **Name three resources useful for emergency and disaster information.** Answers include: Florida Division of Emergency Management Web site, USDA Web site, FDACS Web site, FEMA independent study courses, etc.
 10. **Emergency Support Function (ESF) 17 covers animal protection and agricultural emergencies.**
-

PowerPoint Slides

Slides 1-6



PowerPoint Slides

Slides 7-12

Florida Agriculture at Risk

- Commercial and general aviation have over 120 million passengers annually
- 75 million tourists visit annually – 10% of these are from foreign countries and Canada



 State Agricultural Response Team 7

Florida Agriculture at Risk

- Florida is the target of more hurricanes than any other state



- Florida has been struck by destructive hurricanes over 30 times in the last 20 years

 State Agricultural Response Team 8

Florida Agriculture at Risk

- Florida is a high-risk state for flood, drought and wildfires





 State Agricultural Response Team 9

Florida Agriculture at Risk

Agents that can be introduced, transmitted and/or created by people pose a significant risk

- Anthrax
- Foot-and-mouth disease

 State Agricultural Response Team 10

Florida Agriculture at Risk


Agriculture in Florida has an annual economic impact of \$62 billion — This important industry faces great risks from potential natural and man-made disasters



 State Agricultural Response Team 11

Deficiencies Identified

- Emergency management and planning, as it relates to state agricultural issues, are shared between several cooperating — and often competing — agencies
- These agencies often duplicate efforts and compete for a limited pool of emergency management resources and funding


 State Agricultural Response Team 12

PowerPoint Slides

Slides 13-18

Deficiencies Identified

- An effective level of cooperation and communication between agencies and counties, as it relates to agricultural emergency management, does not exist



State Agricultural Response Team 13

The Solution... SART



State Agricultural Response Team 14

SART Mission

- Empower Floridians through training and resources to enhance animal and agriculture disaster response

State Agricultural Response Team 15

SART Goals

- Promote the establishment of an ESF-17 coordinator in each county responsible for all agriculturally related incidents
- Provide assistance in developing and writing county ESF-17 plans
- Promote the establishment of a county SART for each county
- Provide annual training for all SART and animal and agriculturally related personnel

State Agricultural Response Team 16

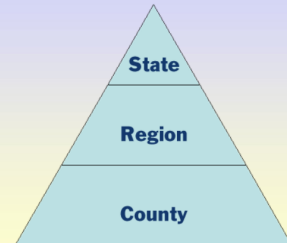
SART Goals

- Identify county resources available for an emergency disaster
- Promote counties to work at a regional level for mutual aid
- Promote the cooperation and exchange of information of interested state, county, and civic agencies

State Agricultural Response Team 17

SART Organization

- SART operates at the state, regional and county levels
- SART supports existing emergency management plans



State Agricultural Response Team 18

PowerPoint Slides

Slides 19-24


Participating Agencies

- USDA Farm Service Agency
- USDA Natural Resources Conservation Service
- USDA Rural Development
- University of Florida-Institute of Food and Agricultural Sciences
- Department of Community Affairs-Division of Emergency Management
- Florida Department of Agriculture and Consumer Services — Division of Animal Industry

 State Agricultural Response Team 19

Participating Agencies

- FDACS Division of Agriculture Environmental Services
- FDACS Division of Plant Industry
- FDACS Division of Dairy
- USDA/APHIS/Veterinary Services
- Univ. of Florida College of Veterinary Medicine
- Univ. of Florida Department of Plant Pathology

 State Agricultural Response Team 20


Participating Agencies

- Florida Veterinary Medical Association
- Florida Animal Control Association
- Southeast Regional Office of the Humane Society of the United States
- Florida Cattlemen's Association
- Florida Sunshine Horse Council
- Florida Farm Bureau

 State Agricultural Response Team 21

Dept. of Community Affairs Div. Of Emergency Management

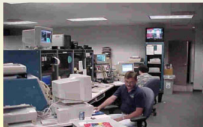

- Director appointed by governor
- State Emergency Management Act
 - Florida Statute Chapter 252
- Comprehensive Emergency Management Plan (CEMP)
 - Provides guidance to state and local officials on procedures, organization and responsibilities
 - Adopts a functional approach that combines the types of assistance to be provided under each ESF

 State Agricultural Response Team 22


Div. of Emergency Management

State emergency operations

- 24 hours a day, 7 days a week
- In all 67 counties
- Manages the Warning Point, Operations Center and the State Emergency Response Team (SERT)





State Warning Point Emergency Operations Center

 State Agricultural Response Team 23

SART at the County Level

- County SART will operate under the direction of the county Emergency Management Director
- County SART should be led by the county ESF-17 Coordinator
- Participating agencies will assign SART personnel to each county
- Additional county SART members will be solicited from each county and support agencies

 State Agricultural Response Team 24

PowerPoint Slides

Slides 25-30

Create a County SART

Bring SART to your county...

- 1. ORGANIZE**
 - Identify people interested in helping animals and agriculture in disasters.
 - Form an advisory board of committed people to lead your SART program.
- 2. ASSESS**
 - Ask staff at your county's emergency operations center about their plans for animals and agriculture in disasters.
 - Study your county's emergency operations plan.
 - Perform a risk assessment.
- 3. TRAIN**
 - Attend SART conferences and training sessions.
 - Participate in county and regional exercises.
- 4. IMPLEMENT**
 - Develop a plan for responding to the needs of animals and agriculture in disasters.
 - Obtain the critical supplies you will need.
- 5. NETWORK**
 - Add info about your county SART to the Florida SART team site, www.flasart.org.
 - Connect with others involved in SART at the county and state level.
 - List resources you can use at the local, regional and state level.

State Agricultural Response Team 25

SART at the Regional Level

- Seven regions, same as Division of Emergency Management state divisions
- Counties within these regions will:
 - Share resources within the region
 - Participate during annual training and exercises
 - Participate in mutual aid during an incident
 - Allow well-prepared counties to assist lesser-prepared counties

State Agricultural Response Team 26

SART at the State Level

- Participating agencies will:
 - Meet on a routine basis to foster a team approach
 - Meet as a team to share information, identify state resources and risks and for emergency management planning
 - Be available to the state EOC during an emergency or disaster
 - Plan, support and participate in annual district training sessions
 - Provide financial support for SART

State Agricultural Response Team 27

SART Training

- Will be provided annually at the regional level
- Will be prepared and supported by the participating agencies
- Will emphasize hands-on training as much as possible

State Agricultural Response Team 28

SART Training

- Will be provided to:
 - All SART members
 - Participating agency personnel
 - Government agency personnel
 - Emergency management personnel
 - Veterinarians
 - Producers
 - Animal control officers
 - Agri-business retailers
 - Disaster Animal Response Teams (DART)
 - Anyone interested in animal or agricultural emergency management issues

State Agricultural Response Team 29

Training Module Topics

- Modules include:
 - Toolkit for Planning a Community-Based SART Training Event
 - SART Introduction
 - Incident Command System (ICS)
 - Livestock and Horses
 - Aquaculture

State Agricultural Response Team 30


PowerPoint Slides

Slides 31-36

SART Web Site

www.flsart.org

- Communication bridge between SART and county SART participants and participating agencies
- Web portal where all county SARTs and all participating agencies can input information
- Alert system through which information can be sent to all county SARTs and all participating agencies




State Agricultural Response Team

31

SART Web Site

- Schedule of available training opportunities
- Resource library
- County-level resource lists for mutual aid




State Agricultural Response Team

32

Key Resources

- **Florida Department of Community Affairs, Division of Emergency Management**
<http://www.floridadisaster.org>
- **United States Department of Agriculture (USDA)**
<http://www.usda.gov>
- **Florida Department of Agriculture and Consumer Services (FDACS)**
<http://www.doacs.state.fl.us>
- **Federal Emergency Management Agency (FEMA)**
<http://www.fema.gov>




State Agricultural Response Team

33

Key Resources

- **Federal Emergency Management Agency (FEMA) Independent Study Courses**
Suggested courses to accompany this module include:

IS-2	Emergency Preparedness
IS-208	State Disaster Management
IS-275	The EOC's Role in Community Preparedness, Response and Recovery Activities
IS-288	Role of Voluntary Agencies in Emergency Management
IS-292	Disaster Basic
IS-317	Introduction to Community Emergency Response Teams




State Agricultural Response Team

34

Key Resources

- **IFAS Disaster Handbook**
<http://disaster.ifas.ufl.edu>
- **National Agricultural Safety Database (NASD)**
<http://www.cdc.gov/nasd>
- **Florida AgSafe**
<http://www.flagsafe.ufl.edu>
- **Extension Disaster Education Network (EDEN)**
<http://www.agctr.lsu.edu/eden>




State Agricultural Response Team

35

Key Resources

- **General seaport and airport information available from Web sites**
<http://dlis.dos.state.fl.us/fcils/seaports.html>
<http://www.broward.org/portannualrep03/p4.pdf>
<http://www.dot.state.fl.us/aviation>
- **2003 tourism statistics available online at**
http://www.visitflorida.org/_pdf/partner_research/YearInBrief/2003YearInBrief.pdf
- **Florida agriculture brochures and publications**
Available for agribusiness and consumers from following site. 'Consumers' link has facts, statistics and additional links.
<http://www.florida-agriculture.com>
- **Florida Hurricanes and Tropical Storms 1871-2001**
Book by John M. William and Iver W. Duedall



State Agricultural Response Team


36

PowerPoint Slides

Slides 37-38

Summary

- Disasters common and possible in Florida
- Deficiencies with the current system of emergency planning and management as it relates to agriculture
- Need for SART team, its mission and goals
- Who will become members of SART and who will support its functions
- How the training for SART will be conducted
- Resources that are readily available



State Agricultural Response Team

37

Thank You!



State Agricultural Response Team

38

PowerPoint Slides

The “Introducing SART” PowerPoint slides are reproduced full-size on the following pages. You can use these pages as a display or photocopy them onto plastic overhead sheets for use with an overhead projector.

Color versions of these slides can be downloaded from the SART Web site:

<www.flsart.org>.



Introducing SART



Introducing SART

Prepared by:

Gregory S. Christy
State ESF-17 Coordinator
Florida Department of Agriculture and Consumer Services,
Division of Animal Industry



Learning Objectives

- Identify reasons why Florida is at risk for disasters
- Identify and describe the disasters that may strike the state
- List the agencies that coordinate and/or participate in emergency and disaster response
- Discuss the problems associated with these separate agencies responding and planning
- Cite the mission, concept and goal of the SART program
- Identify key resources available for use



Florida Agriculture at Risk

Florida has been called an agricultural
“sentinel state” because if a foreign animal
or plant disease introduction or
agroterrorism event occurs in the United
States. . . .

. . .there is a good chance it will occur
FIRST IN FLORIDA!



Florida Agriculture at Risk

Florida's borders are truly porous:

- 12 major seaports
- 111 general airfields
- 20 commercial airports
- 12 military airfields
- 700 privately owned airports




Florida Agriculture at Risk

- Commercial and general aviation have over 120 million passengers annually
- 75 million tourists visit annually – 10% of these are from foreign countries and Canada



Florida Agriculture at Risk

- Florida is the target of more hurricanes than any other state
- 
- Florida has been struck by destructive hurricanes over 30 times in the last 20 years



Florida Agriculture at Risk

- Florida is a high-risk state for flood, drought and wildfires



Florida Agriculture at Risk

Agents that can be introduced, transmitted and/or created by people pose a significant risk

- Anthrax
- Foot-and-mouth disease



Deficiencies Identified

- Emergency management and planning, as it relates to state agricultural issues, are shared between several cooperating — and often competing — agencies
- These agencies often duplicate efforts and compete for a limited pool of emergency management resources and funding



Deficiencies Identified

- An effective level of cooperation and communication between agencies and counties, as it relates to agricultural emergency management, does not exist



The Solution... SART



SART Mission

- Empower Floridians through training and resources to enhance animal and agriculture disaster response



SART Goals

- Promote the establishment of an ESF-17 coordinator in each county responsible for all agriculturally related incidents
- Provide assistance in developing and writing county ESF-17 plans
- Promote the establishment of a county SART for each county
- Provide annual training for all SART and animal and agriculturally related personnel



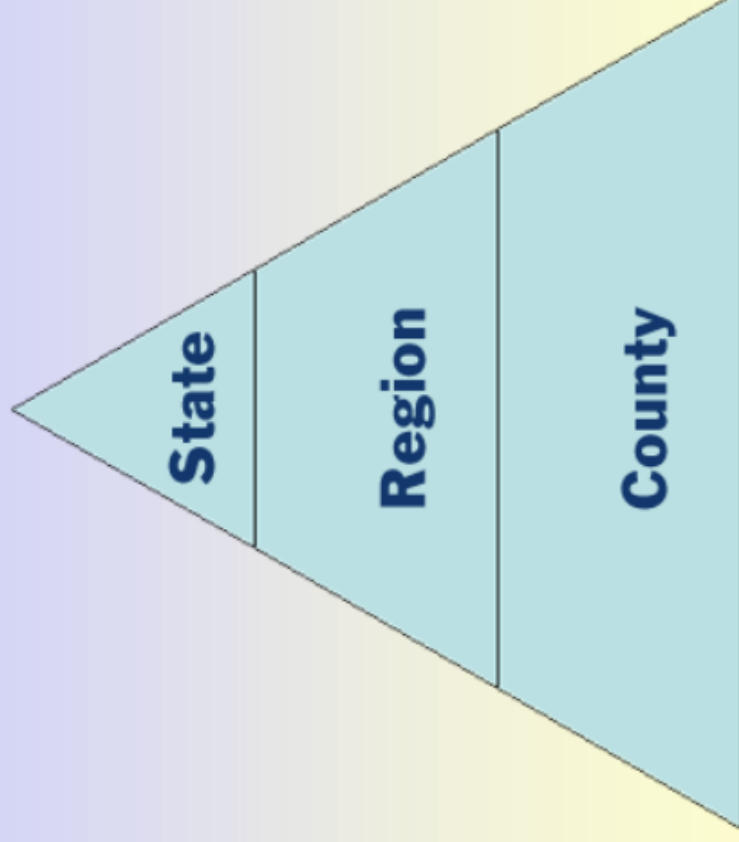
SART Goals

- Identify county resources available for an emergency disaster
- Promote counties to work at a regional level for mutual aid
- Promote the cooperation and exchange of information of interested state, county, and civic agencies



SART Organization

- SART operates at the state, regional and county levels
- SART supports existing emergency management plans



Participating Agencies

- USDA Farm Service Agency
- USDA Natural Resources Conservation Service
- USDA Rural Development
- University of Florida-Institute of Food and Agricultural Sciences
- Department of Community Affairs-Division of Emergency Management
- Florida Department of Agriculture and Consumer Services — Division of Animal Industry



Participating Agencies

- FDACS Division of Agriculture Environmental Services
- FDACS Division of Plant Industry
- FDACS Division of Dairy
- USDA/APHIS/Veterinary Services
- Univ. of Florida College of Veterinary Medicine
- Univ. of Florida Department of Plant Pathology



Participating Agencies

- Florida Veterinary Medical Association
- Florida Animal Control Association
- Southeast Regional Office of the Humane Society of the United States
- Florida Cattlemen's Association
- Florida Sunshine Horse Council
- Florida Farm Bureau



Dept. of Community Affairs

Div. Of Emergency Management

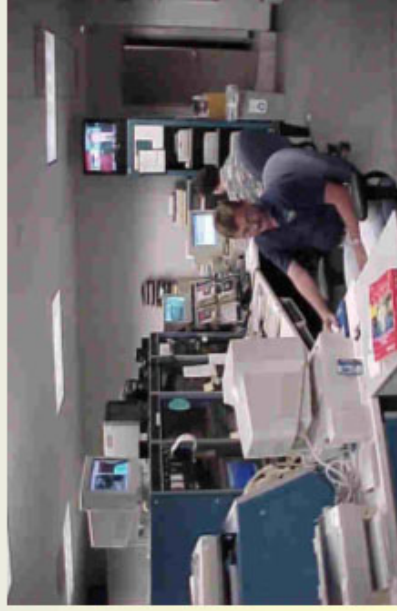
- Director appointed by governor
- State Emergency Management Act
 - Florida Statute Chapter 252
- Comprehensive Emergency Management Plan (CEMP)
 - Provides guidance to state and local officials on procedures, organization and responsibilities
 - Adopts a functional approach that combines the types of assistance to be provided under each ESF



Div. of Emergency Management

State emergency operations

- 24 hours a day, 7 days a week
- In all 67 counties
- Manages the Warning Point, Operations Center and the State Emergency Response Team (SERT)



State Warning Point



Emergency Operations Center



State Agricultural Response Team

SART at the County Level

- County SART will operate under the direction of the county Emergency Management Director
- County SART should be led by the county ESF-17 Coordinator
- Participating agencies will assign SART personnel to each county
- Additional county SART members will be solicited from each county and support agencies

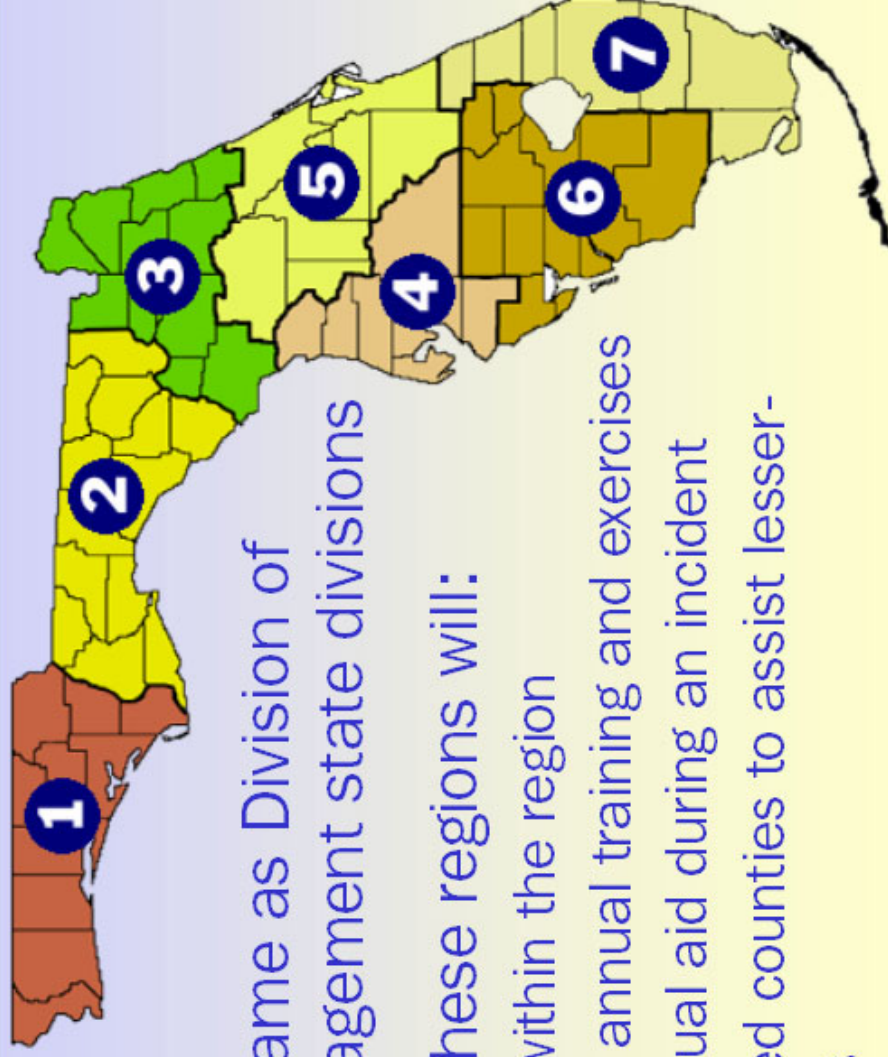


Create a County SART

Bring SART to your county...



SART at the Regional Level



- Seven regions, same as Division of Emergency Management state divisions
- Counties within these regions will:
 - Share resources within the region
 - Participate during annual training and exercises
 - Participate in mutual aid during an incident
 - Allow well-prepared counties to assist lesser-prepared counties



SART at the State Level

- Participating agencies will:
 - Meet on a routine basis to foster a team approach
 - Meet as a team to share information, identify state resources and risks and for emergency management planning
 - Be available to the state EOC during an emergency or disaster
 - Plan, support and participate in annual district training sessions
 - Provide financial support for SART



SART Training

- Will be provided annually at the regional level
- Will be prepared and supported by the participating agencies
- Will emphasize hands-on training as much as possible



SART Training

- Will be provided to:
 - All SART members
 - Participating agency personnel
 - Government agency personnel
 - Emergency management personnel
 - Veterinarians
 - Producers
 - Animal control officers
 - Agri-business retailers
 - Disaster Animal Response Teams (DART)
 - Anyone interested in animal or agricultural emergency management issues



Training Module Topics

- Modules include:
 - Toolkit for Planning a Community-Based SART Training Event
 - SART Introduction
 - Incident Command System (ICS)
 - Livestock and Horses
 - Aquaculture



SART Web Site

www.flsart.org

- Communication bridge between SART and county SART participants and participating agencies
- Web portal where all county SARTs and all participating agencies can input information
- Alert system through which information can be sent to all county SARTs and all participating agencies



SART Web Site

- Schedule of available training opportunities
- Resource library
- County-level resource lists for mutual aid



Key Resources

- **Florida Department of Community Affairs, Division of Emergency Management**
<http://www.floridadisaster.org>
- **United States Department of Agriculture (USDA)**
<http://www.usda.gov>
- **Florida Department of Agriculture and Consumer Services (FDACS)**
<http://www.doacs.state.fl.us>
- **Federal Emergency Management Agency (FEMA)**
<http://www.fema.gov>



Key Resources

- **Federal Emergency Management Agency (FEMA) Independent Study Courses**

Suggested courses to accompany this module include:

IS-2	Emergency Preparedness
IS-208	State Disaster Management
IS-275	The EOC's Role in Community Preparedness, Response and Recovery Activities
IS-288	Role of Voluntary Agencies in Emergency Management
IS-292	Disaster Basic
IS-317	Introduction to Community Emergency Response Teams



Key Resources

- **IFAS Disaster Handbook**
<http://disaster.ifas.ufl.edu>
- **National Agricultural Safety Database (NASD)**
<http://www.cdc.gov/nasd>
- **Florida AgSafe**
<http://www.flagsafe.ufl.edu>
- **Extension Disaster Education Network (EDEN)**
<http://www.agctr.lsu.edu/eden>



Key Resources

- **General seaport and airport information available from Web sites**

<http://dlis.dos.state.fl.us/fgils/seaports.html>

<http://www.broward.org/portannualrep03/p4.pdf>

<http://www.dot.state.fl.us/aviation>

- **2003 tourism statistics available online at**

http://www.visitflorida.org/_pdf/partner_research/YearInBrief/2003YearInBrief.pdf

- **Florida agriculture brochures and publications**

Available for agribusiness and consumers from following site. 'Consumers' link has facts, statistics and additional links.

<http://www.florida-agriculture.com>

- ***Florida Hurricanes and Tropical Storms 1871-2001***

Book by John M. William and Iver W. Duedall



Summary

- Disasters common and possible in Florida
- Deficiencies with the current system of emergency planning and management as it relates to agriculture
- Need for SART team, its mission and goals
- Who will become members of SART and who will support its functions
- How the training for SART will be conducted
- Resources that are readily available



Thank You!



PowerPoint Slides — Handout Pages

The “Introducing SART” PowerPoint slides are reproduced on the following pages at reduced size with space for participant notes.

Also included in *Introducing SART* Workbook, available on the SART Web site:

<www.flisart.org>

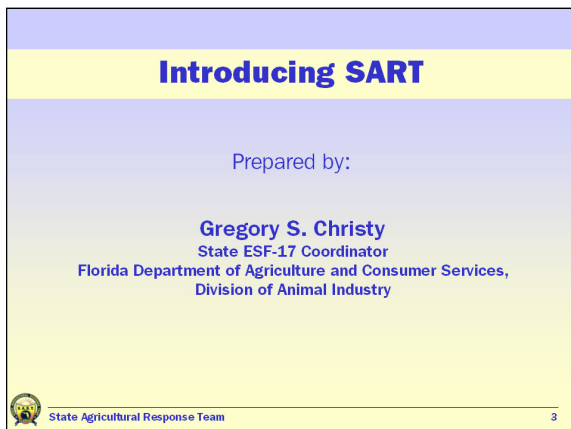
Introducing SART

page 1

Slides 1-3








Introducing SART

page 2

Slides 4-6

Learning Objectives

- Identify reasons why Florida is at risk for disasters
- Identify and describe the disasters that may strike the state
- List the agencies that coordinate and/or participate in emergency and disaster response
- Discuss the problems associated with these separate agencies responding and planning
- Cite the mission, concept and goal of the SART program
- Identify key resources available for use


State Agricultural Response Team

4

Florida Agriculture at Risk

Florida has been called an agricultural “sentinel state” because if a foreign animal or plant disease introduction or agroterrorism event occurs in the United States. . .

. . .there is a good chance it will occur
FIRST IN FLORIDA!

State Agricultural Response Team

5

Florida Agriculture at Risk

Florida's borders are truly porous:

- 12 major seaports
- 111 general airfields
- 20 commercial airports
- 12 military airfields
- 700 privately owned airports



State Agricultural Response Team

6

Introducing SART

page 3

Slides 7-9

Florida Agriculture at Risk

- Commercial and general aviation have over 120 million passengers annually
- 75 million tourists visit annually – 10% of these are from foreign countries and Canada



 State Agricultural Response Team

7

Florida Agriculture at Risk

- Florida is the target of more hurricanes than any other state



- Florida has been struck by destructive hurricanes over 30 times in the last 20 years

 State Agricultural Response Team

8

Florida Agriculture at Risk

- Florida is a high-risk state for flood, drought and wildfires



 State Agricultural Response Team

9

Introducing SART


page 4

Slides 10-12

Florida Agriculture at Risk

Agents that can be introduced, transmitted and/or created by people pose a significant risk

- Anthrax
- Foot-and-mouth disease

 State Agricultural Response Team 10

Florida Agriculture at Risk


Agriculture in Florida has an annual economic impact of \$62 billion — This important industry faces great risks from potential natural and man-made disasters



 State Agricultural Response Team 11

Deficiencies Identified

- Emergency management and planning, as it relates to state agricultural issues, are shared between several cooperating — and often competing — agencies
- These agencies often duplicate efforts and compete for a limited pool of emergency management resources and funding

 State Agricultural Response Team 12


Introducing SART


page 5

Slides 13-15

Deficiencies Identified

- An effective level of cooperation and communication between agencies and counties, as it relates to agricultural emergency management, does not exist



State Agricultural Response Team13

The Solution... SART



State Agricultural Response Team14

SART Mission

- Empower Floridians through training and resources to enhance animal and agriculture disaster response

State Agricultural Response Team15

Introducing SART

page 6

Slides 16-18

SART Goals


- Promote the establishment of an ESF-17 coordinator in each county responsible for all agriculturally related incidents
- Provide assistance in developing and writing county ESF-17 plans
- Promote the establishment of a county SART for each county
- Provide annual training for all SART and animal and agriculturally related personnel

State Agricultural Response Team

16

SART Goals

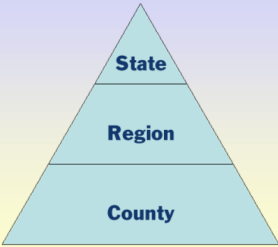
- Identify county resources available for an emergency disaster
- Promote counties to work at a regional level for mutual aid
- Promote the cooperation and exchange of information of interested state, county, and civic agencies


State Agricultural Response Team

17

SART Organization

- SART operates at the state, regional and county levels
- SART supports existing emergency management plans



State Agricultural Response Team

18


Introducing SART

page 7

Slides 19-21


Participating Agencies

- USDA Farm Service Agency
- USDA Natural Resources Conservation Service
- USDA Rural Development
- University of Florida-Institute of Food and Agricultural Sciences
- Department of Community Affairs-Division of Emergency Management
- Florida Department of Agriculture and Consumer Services — Division of Animal Industry

 State Agricultural Response Team 19

Participating Agencies

- FDACS Division of Agriculture Environmental Services
- FDACS Division of Plant Industry
- FDACS Division of Dairy
- USDA/APHIS/Veterinary Services
- Univ. of Florida College of Veterinary Medicine
- Univ. of Florida Department of Plant Pathology

 State Agricultural Response Team 20

Participating Agencies

- Florida Veterinary Medical Association
- Florida Animal Control Association
- Southeast Regional Office of the Humane Society of the United States
- Florida Cattlemen's Association
- Florida Sunshine Horse Council
- Florida Farm Bureau

 State Agricultural Response Team 21


Introducing SART

page 8

Slides 22-24

Dept. of Community Affairs Div. Of Emergency Management

- Director appointed by governor
- State Emergency Management Act
 - Florida Statute Chapter 252
- Comprehensive Emergency Management Plan (CEMP)
 - Provides guidance to state and local officials on procedures, organization and responsibilities
 - Adopts a functional approach that combines the types of assistance to be provided under each ESF



State Agricultural Response Team

22

Div. of Emergency Management

State emergency operations

- 24 hours a day, 7 days a week
- In all 67 counties
- Manages the Warning Point, Operations Center and the State Emergency Response Team (SERT)



State Warning Point Emergency Operations Center




State Agricultural Response Team

23

SART at the County Level

- County SART will operate under the direction of the county Emergency Management Director
- County SART should be led by the county ESF-17 Coordinator
- Participating agencies will assign SART personnel to each county
- Additional county SART members will be solicited from each county and support agencies



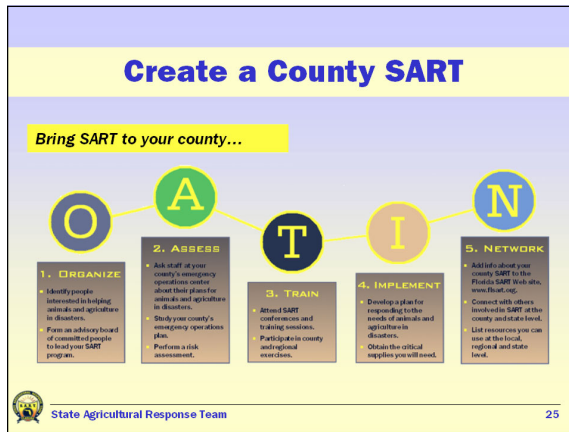
State Agricultural Response Team

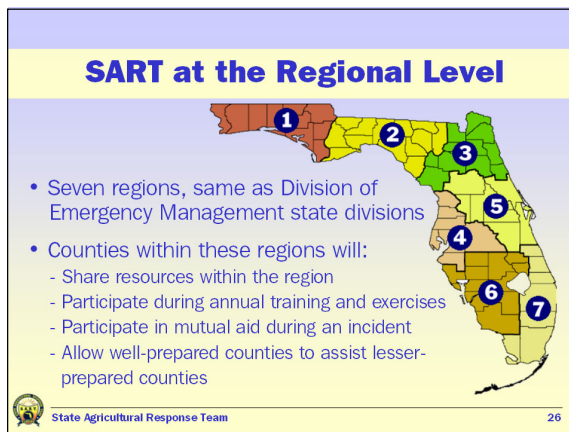
24

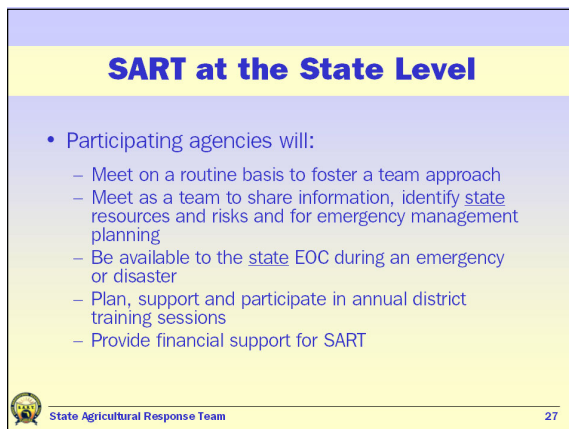
Introducing SART

page 9

Slides 25-27







Introducing SART

page 10

Slides 28-30

SART Training

- Will be provided annually at the regional level
- Will be prepared and supported by the participating agencies
- Will emphasize hands-on training as much as possible

 State Agricultural Response Team 28


SART Training

- Will be provided to:
 - All SART members
 - Participating agency personnel
 - Government agency personnel
 - Emergency management personnel
 - Veterinarians
 - Producers
 - Animal control officers
 - Agri-business retailers
 - Disaster Animal Response Teams (DART)
 - Anyone interested in animal or agricultural emergency management issues

 State Agricultural Response Team 29

Training Module Topics

- Modules include:
 - Toolkit for Planning a Community-Based SART Training Event
 - SART Introduction
 - Incident Command System (ICS)
 - Livestock and Horses
 - Aquaculture

 State Agricultural Response Team 30

Introducing SART


page 11

Slides 31-33

SART Web Site

www.flsart.org


- Communication bridge between SART and county SART participants and participating agencies
- Web portal where all county SARTs and all participating agencies can input information
- Alert system through which information can be sent to all county SARTs and all participating agencies

State Agricultural Response Team

31

SART Web Site


- Schedule of available training opportunities
- Resource library
- County-level resource lists for mutual aid

State Agricultural Response Team

32

Key Resources

- **Florida Department of Community Affairs, Division of Emergency Management**
<http://www.floridadisaster.org>
- **United States Department of Agriculture (USDA)**
<http://www.usda.gov>
- **Florida Department of Agriculture and Consumer Services (FDACS)**
<http://www.doacs.state.fl.us>
- **Federal Emergency Management Agency (FEMA)**
<http://www.fema.gov>

State Agricultural Response Team

33

Introducing SART


page 12

Slides 34-36

Key Resources

- **Federal Emergency Management Agency (FEMA) Independent Study Courses**
Suggested courses to accompany this module include:

IS-2	Emergency Preparedness
IS-208	State Disaster Management
IS-275	The EOC's Role in Community Preparedness, Response and Recovery Activities
IS-288	Role of Voluntary Agencies in Emergency Management
IS-292	Disaster Basic
IS-317	Introduction to Community Emergency Response Teams




State Agricultural Response Team

34

Key Resources

- **IFAS Disaster Handbook**
<http://disaster.ifas.ufl.edu>
- **National Agricultural Safety Database (NASD)**
<http://www.cdc.gov/nasd>
- **Florida AgSafe**
<http://www.flagsafe.ufl.edu>
- **Extension Disaster Education Network (EDEN)**
<http://www.agctr.lsu.edu/eden>




State Agricultural Response Team

35

Key Resources

- **General seaport and airport information available from Web sites**
<http://dlis.dos.state.fl.us/fpils/seaports.html>
<http://www.broward.org/portannualrep03/p4.pdf>
<http://www.dot.state.fl.us/aviation>
- **2003 tourism statistics available online at**
http://www.visitflorida.org/_pdf/partner_research/YearInBrief/2003YearInBrief.pdf
- **Florida agriculture brochures and publications**
Available for agribusiness and consumers from following site. "Consumers" link has facts, statistics and additional links.
<http://www.florida-agriculture.com>
- **Florida Hurricanes and Tropical Storms 1871-2001**
Book by John M. William and Iver W. Duedall




State Agricultural Response Team

36

©

Summary

- Disasters common and possible in Florida
- Deficiencies with the current system of emergency planning and management as it relates to agriculture
- Need for SART team, its mission and goals
- Who will become members of SART and who will support its functions
- How the training for SART will be conducted
- Resources that are readily available

State Agricultural Response Team

37

Thank You!



State Agricultural Response Team

38
